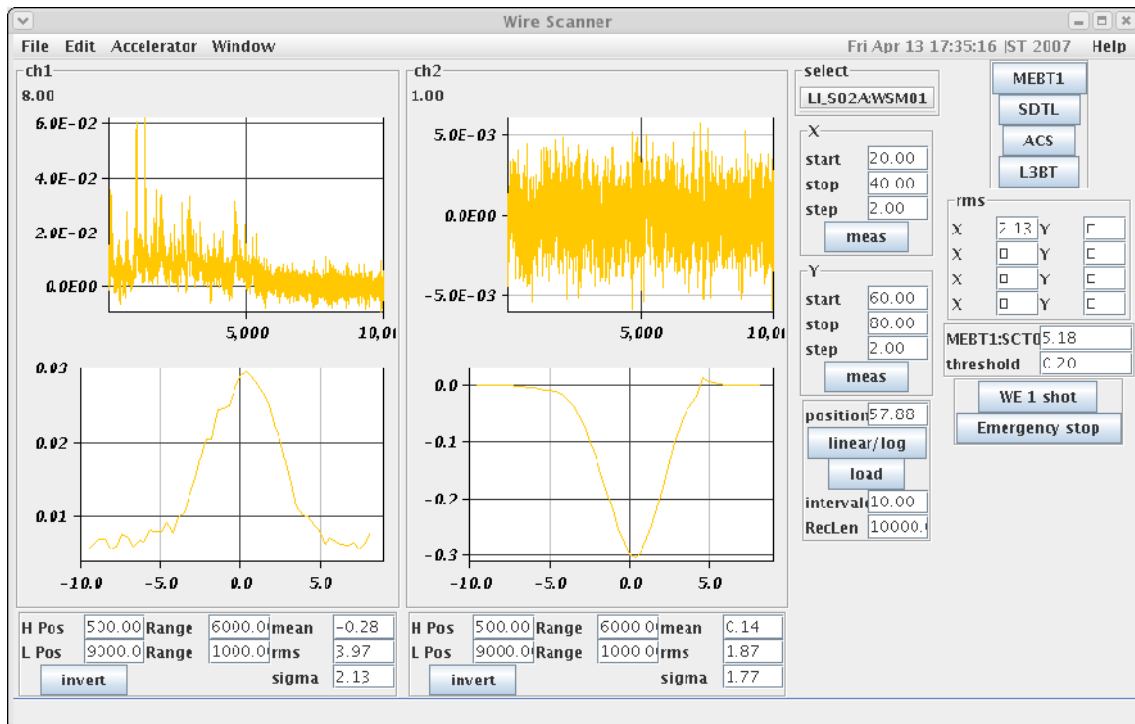
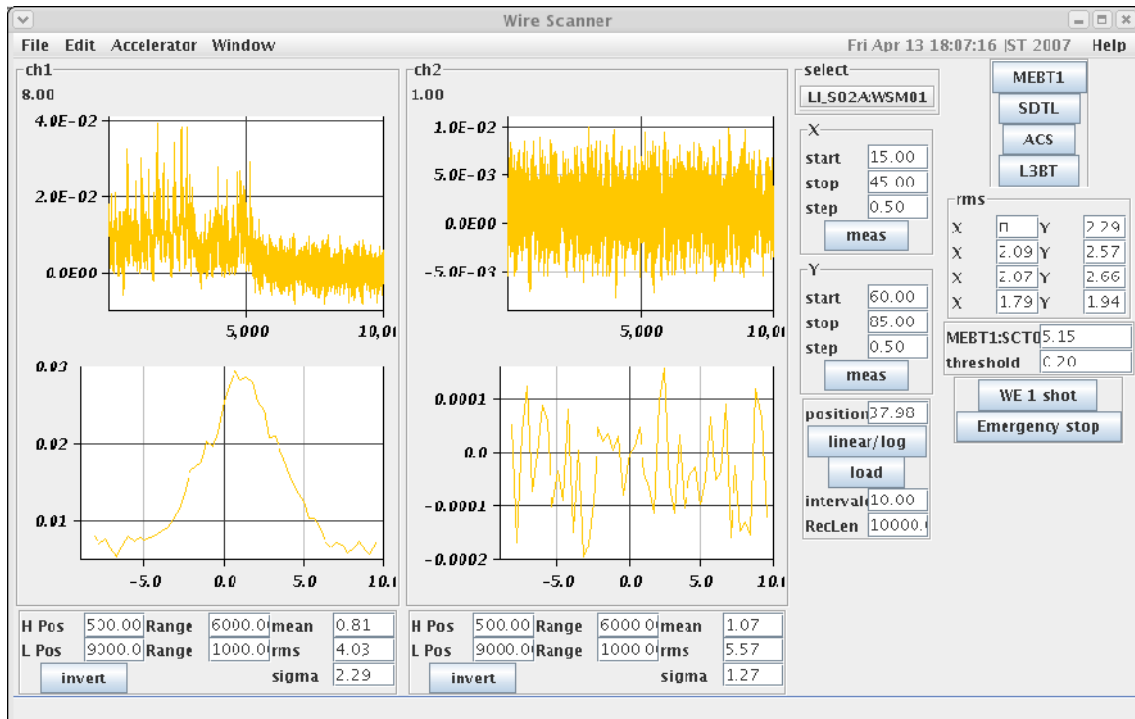


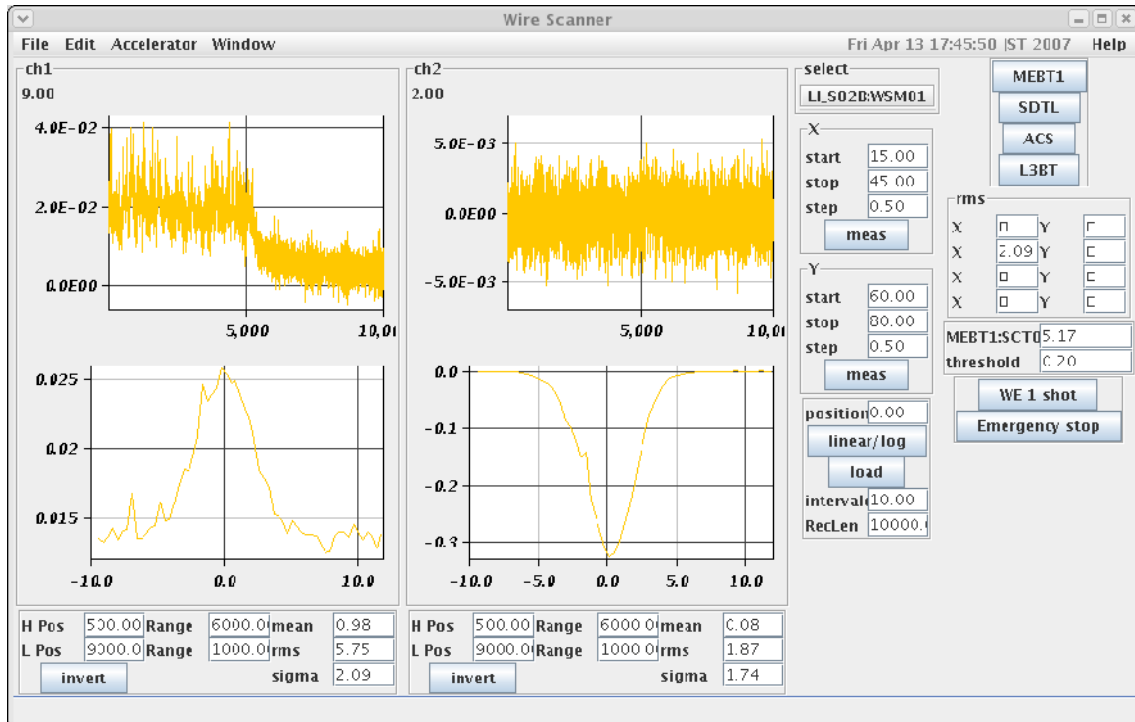
S02A:WSM01:X 60-80/0.5mm, PRETRG=0, TRGDELAY=5us, 500-6500/9000-10000



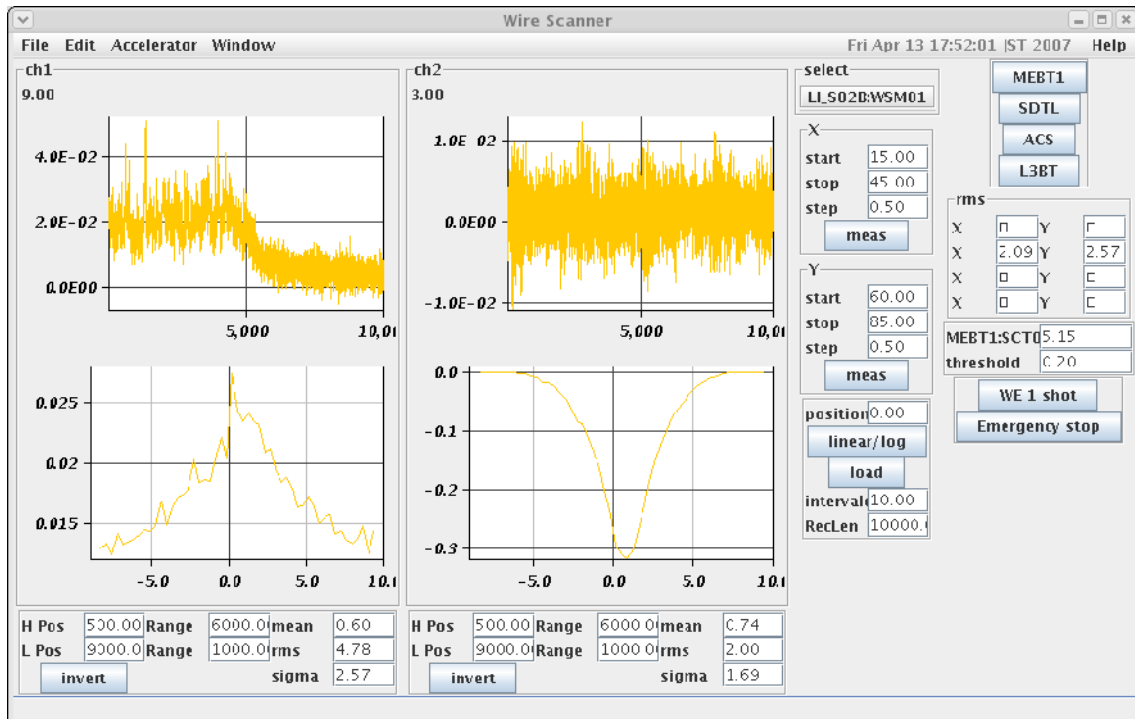
S02A:WSM01:Y 60-80/0.5mm, PRETRG=0, TRGDELAY=5us, 500-6500/9000-10000



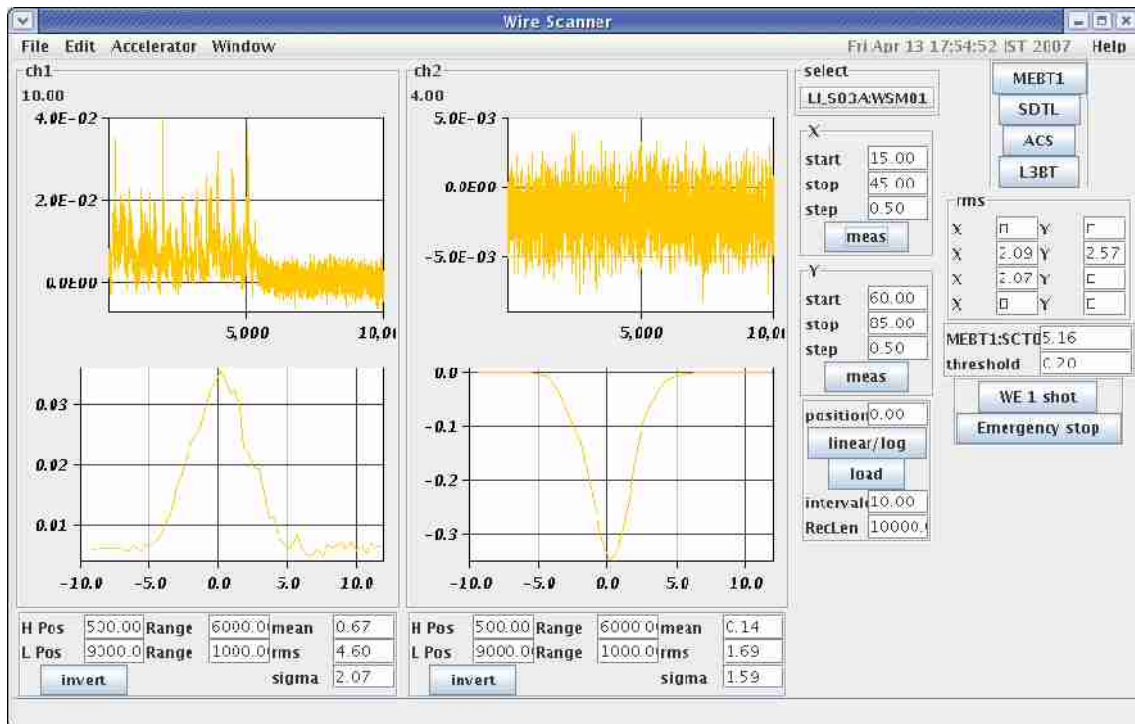
S02B:WSM01:X 15-40/0.5mm, PRETRG=0, TRGDELAY=5us, 500-6500/9000-10000



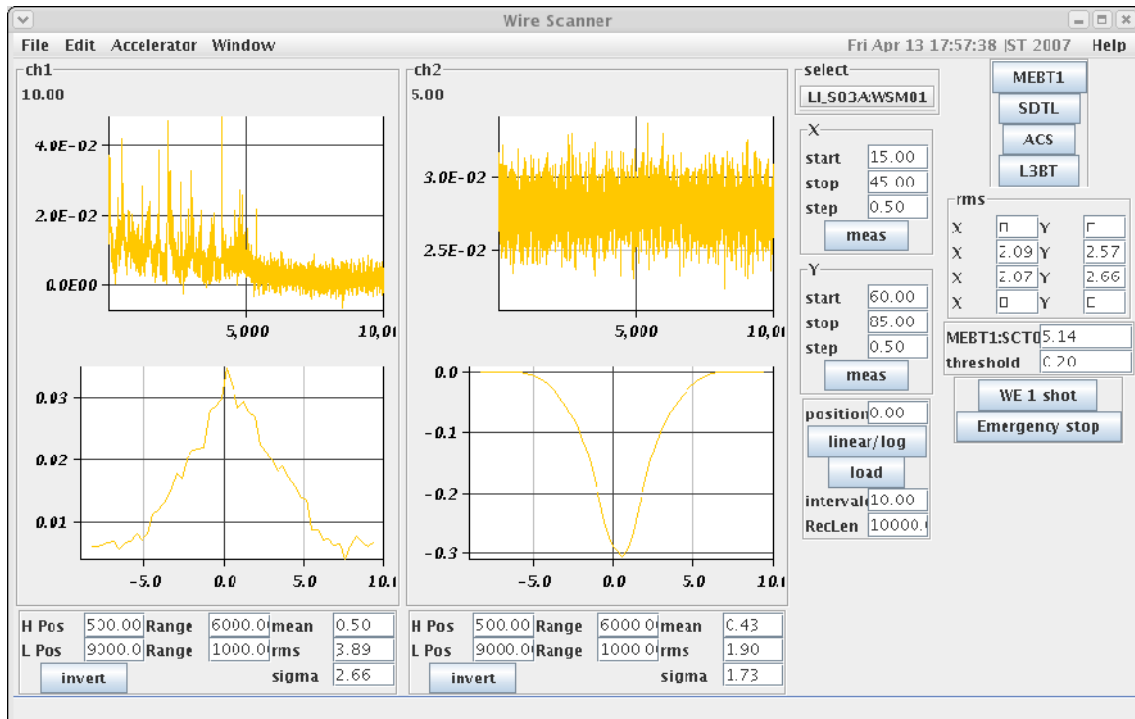
S02B:WSM01:Y 60-85/0.5mm, PRETRG=0, TRGDELAY=5us, 500-6500/9000-10000



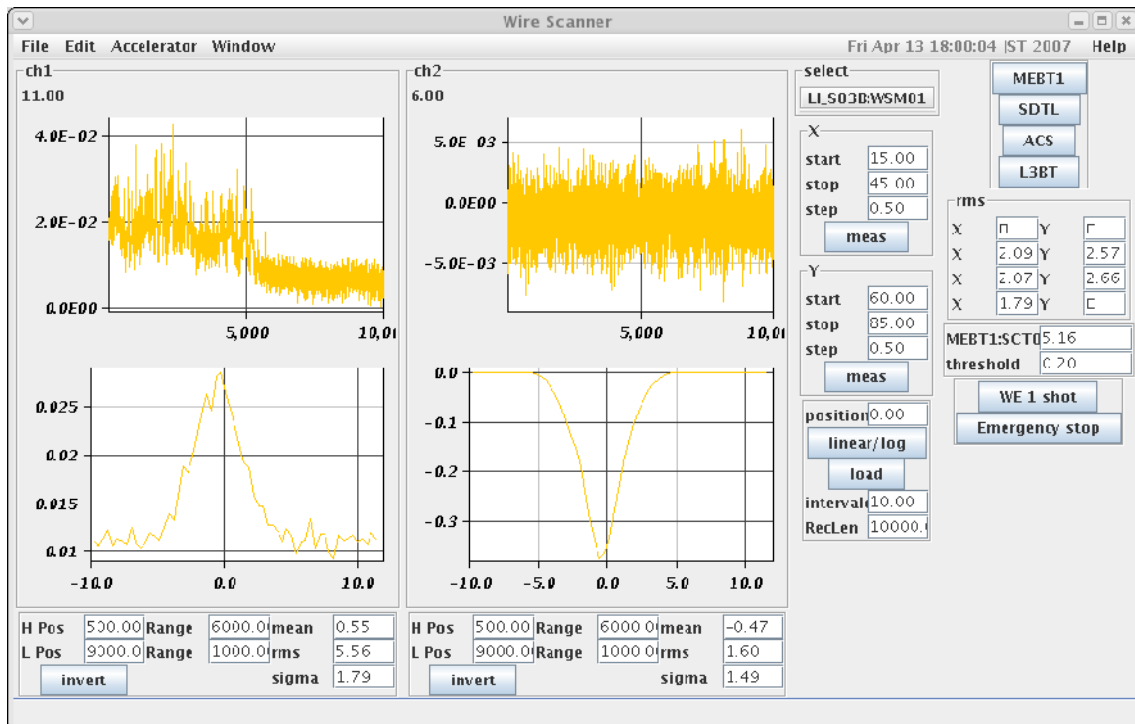
S03A:WSM01:X 15-45/0.5mm, PRETRG=0, TRGDELAY=5us, 500-6500/9000-10000



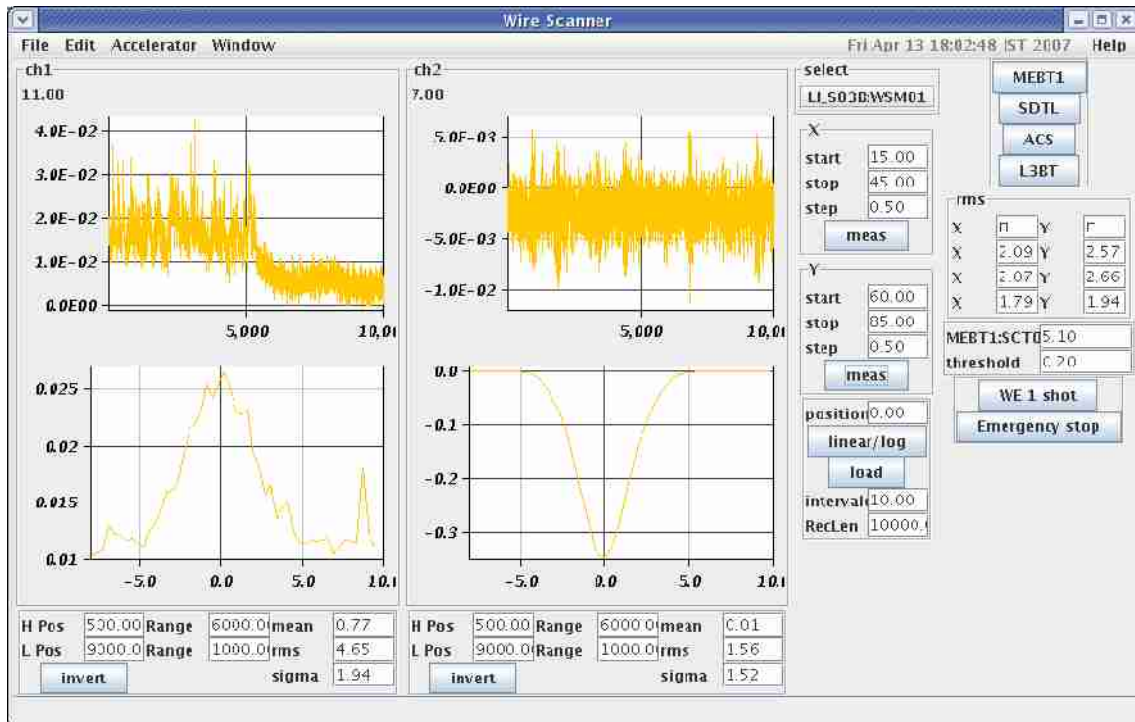
S03A:WSM01:Y 60-85/0.5mm, PRETRG=0, TRGDELAY=5us, 500-6500/9000-10000



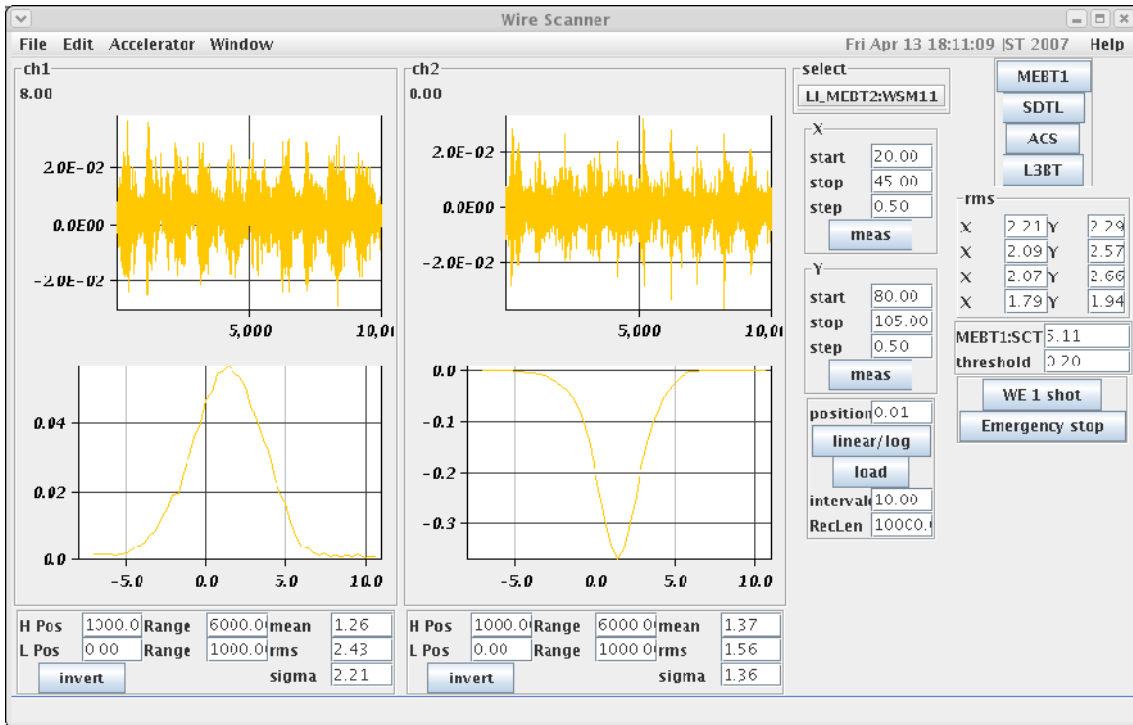
S03B:WSM01:X 15-45/0.5mm, PRETRG=0, TRGDELAY=5us, 500-6500/9000-10000



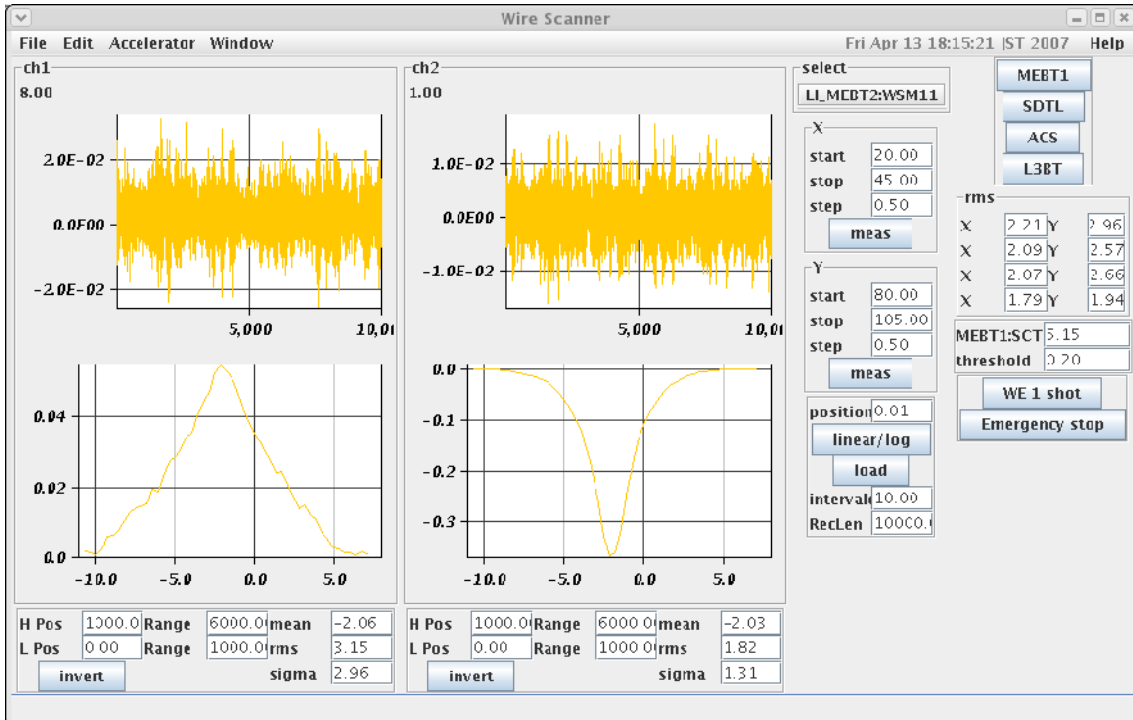
S03B:WSM01:Y 60-85/0.5mm, PRETRG=0, TRGDELAY=5us, 500-6500/9000-10000



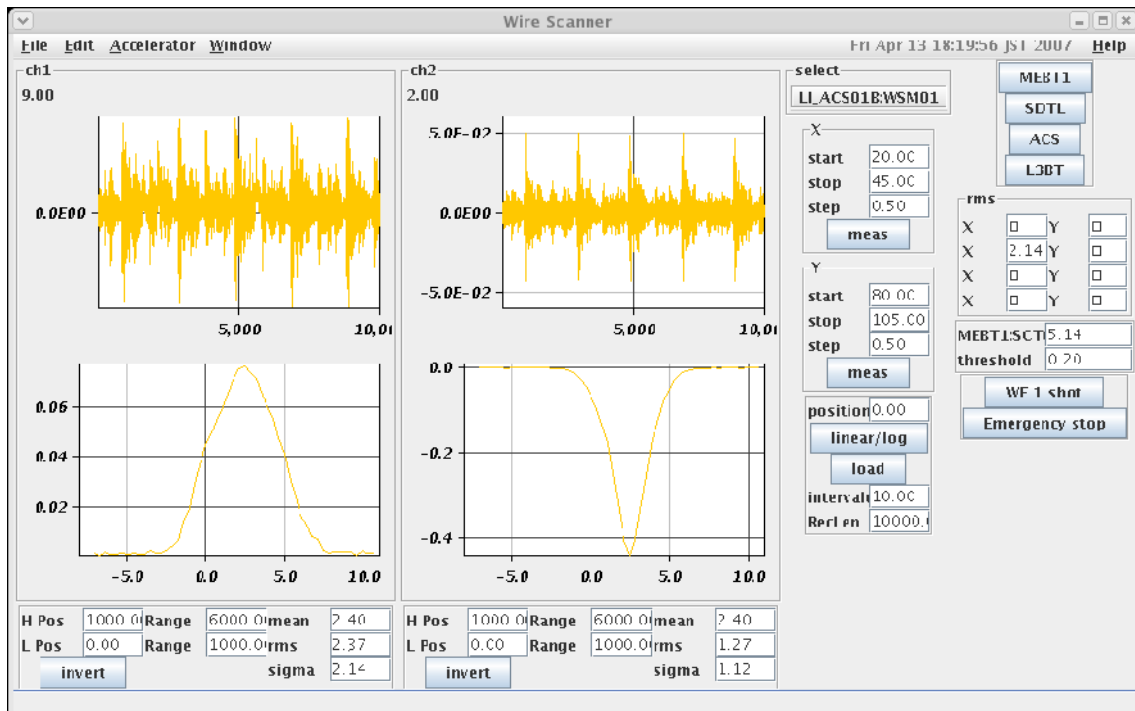
MEBT2:WSM11:X 20-45/0.5mm, PRETRG=0, TRGDELAY=0, 1000-7000/0-1000



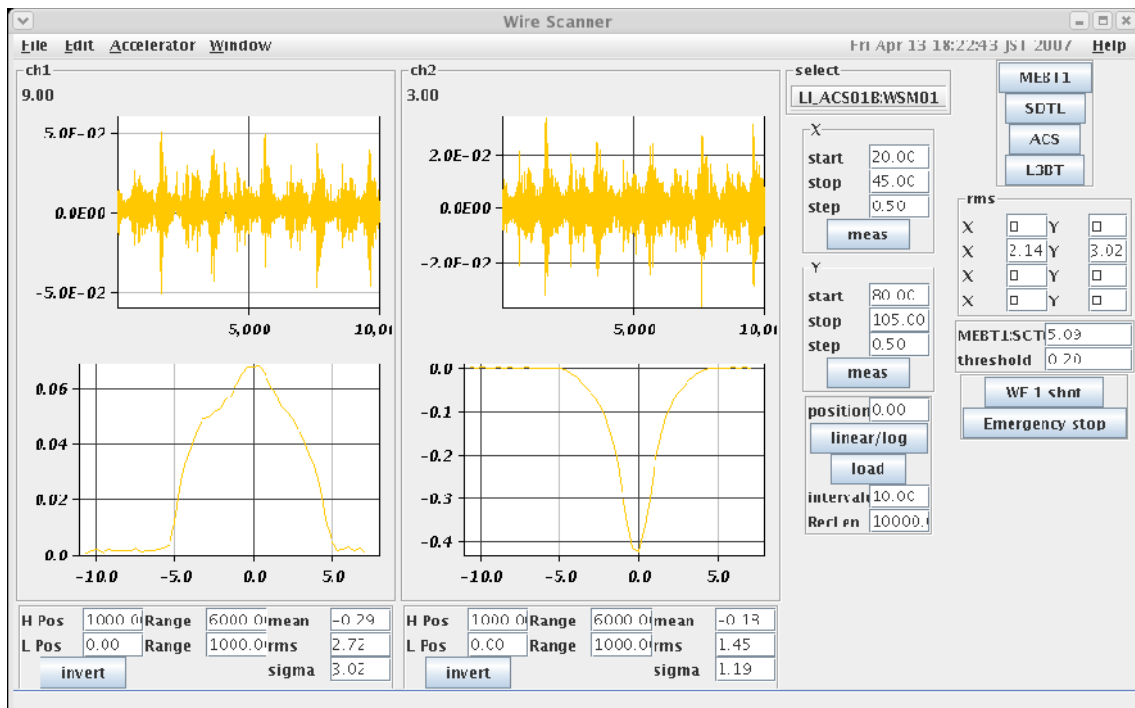
MEBT2:WSM11:Y 80-105/0.5mm, PRETRG=0, TRGDELAY=0, 1000-7000/0-1000



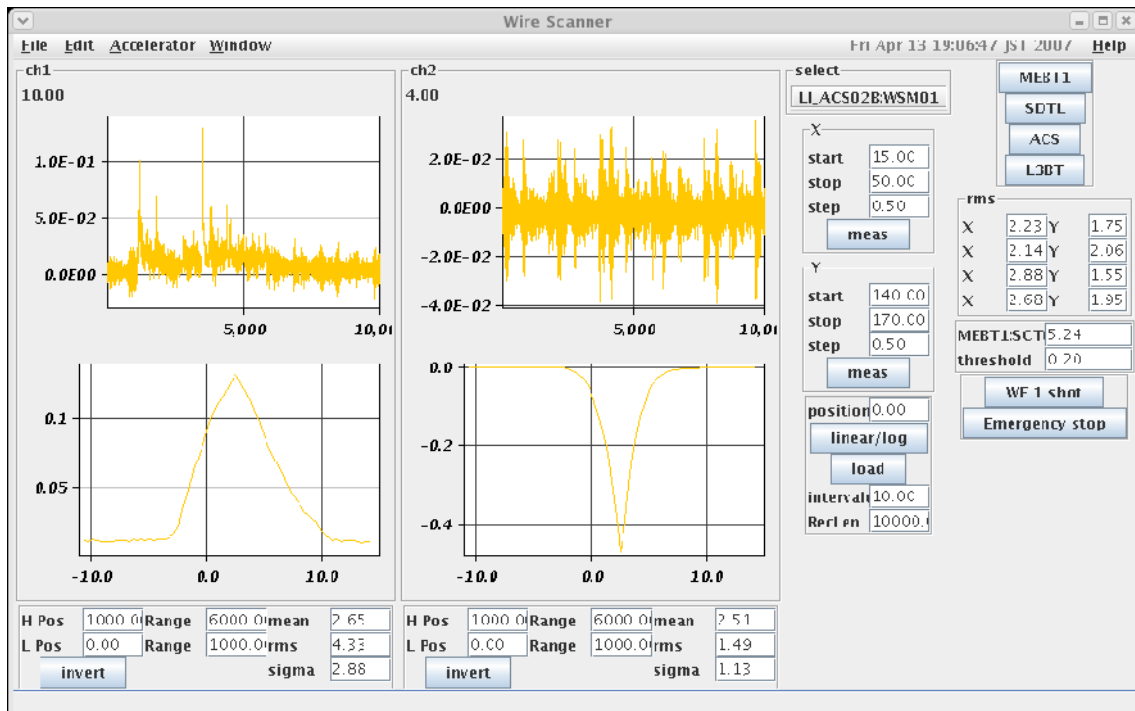
ACS01B:WSM01:X 20-45/0.5mm, PRETRG=0, TRGDELAY=0, 1000-7000/0-1000



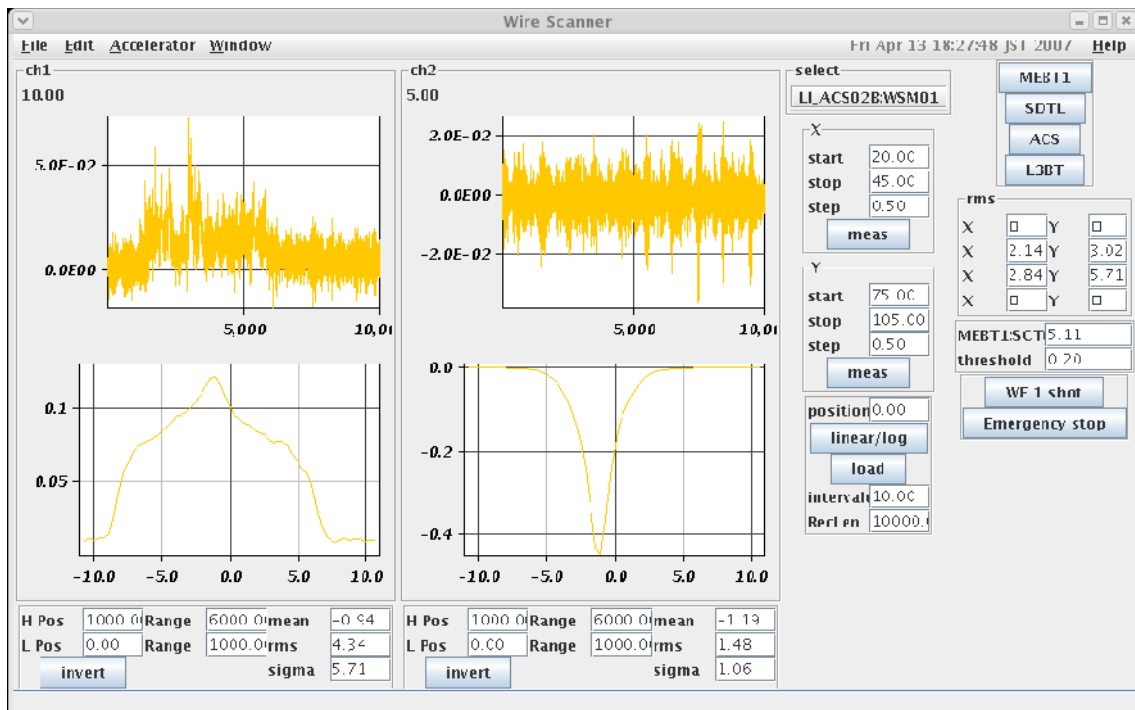
ACS01B:WSM01:Y 80-105/0.5mm, PRETRG=0, TRGDELAY=0, 1000-7000/0-1000



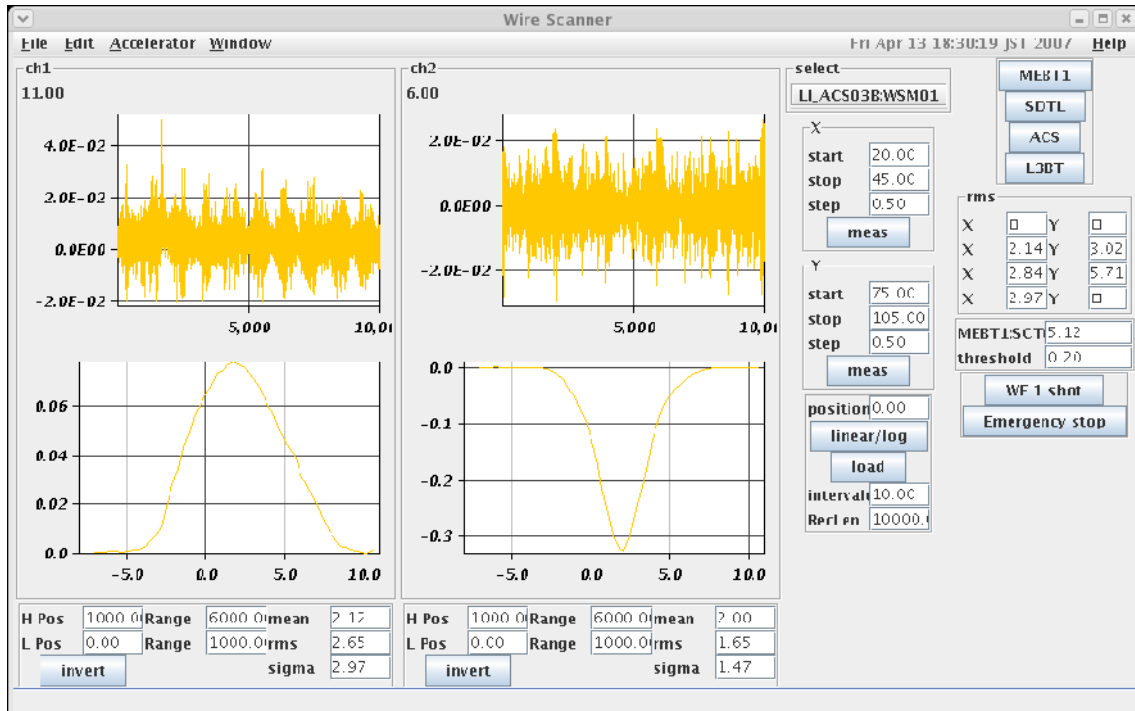
ACS02B:WSM01:X 15-50/0.5mm, PRETRG=0, TRGDELAY=0, 1000-7000/0-1000



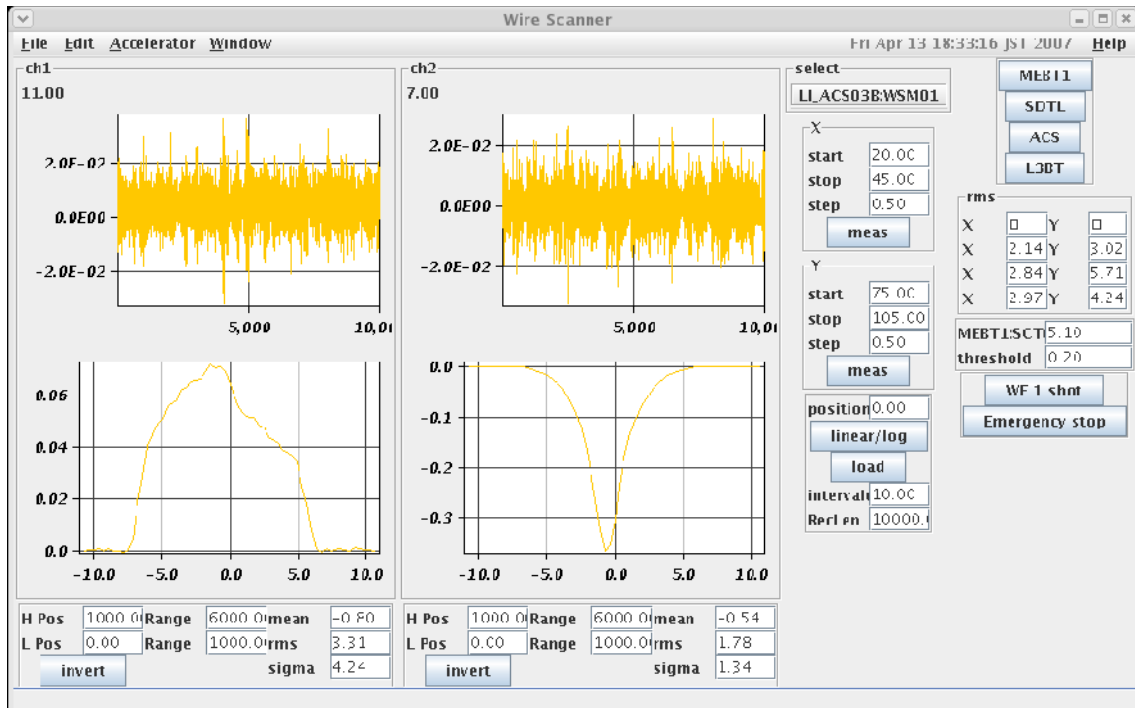
ACS02B:WSM01:Y 75-105/0.5mm, PRETRG=0, TRGDELAY=0, 1000-7000/0-1000



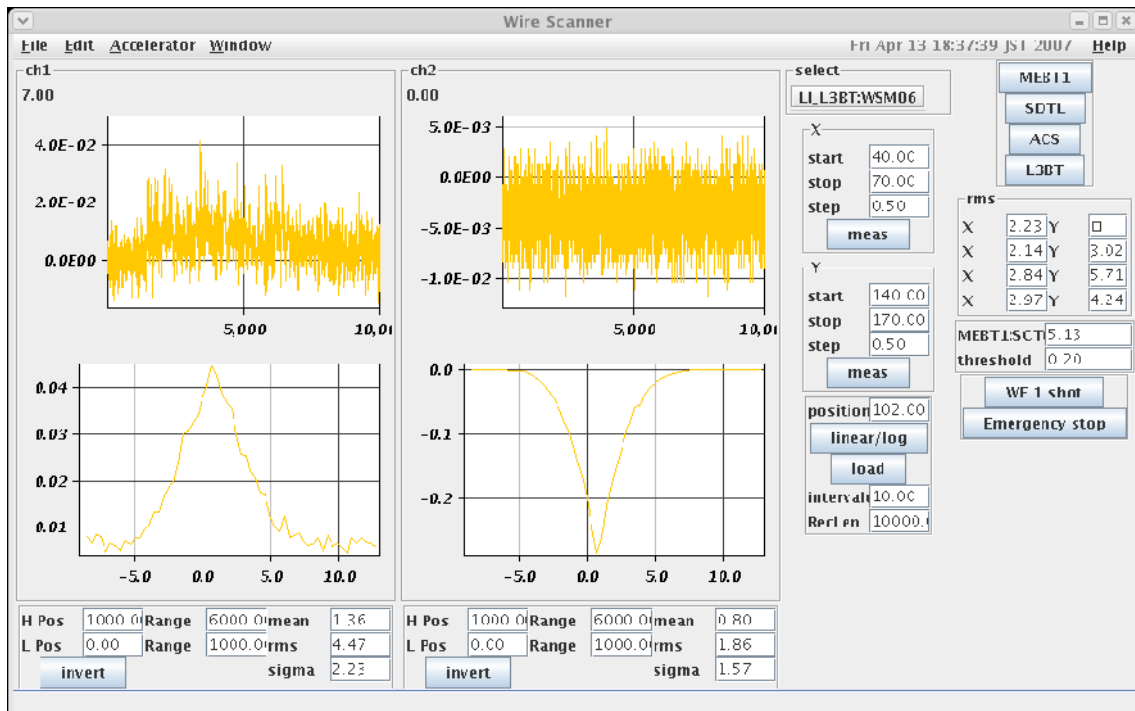
ACS03B:WSM01:X 20-45/0.5mm, PRETRG=0, TRGDELAY=0, 1000-7000/0-1000



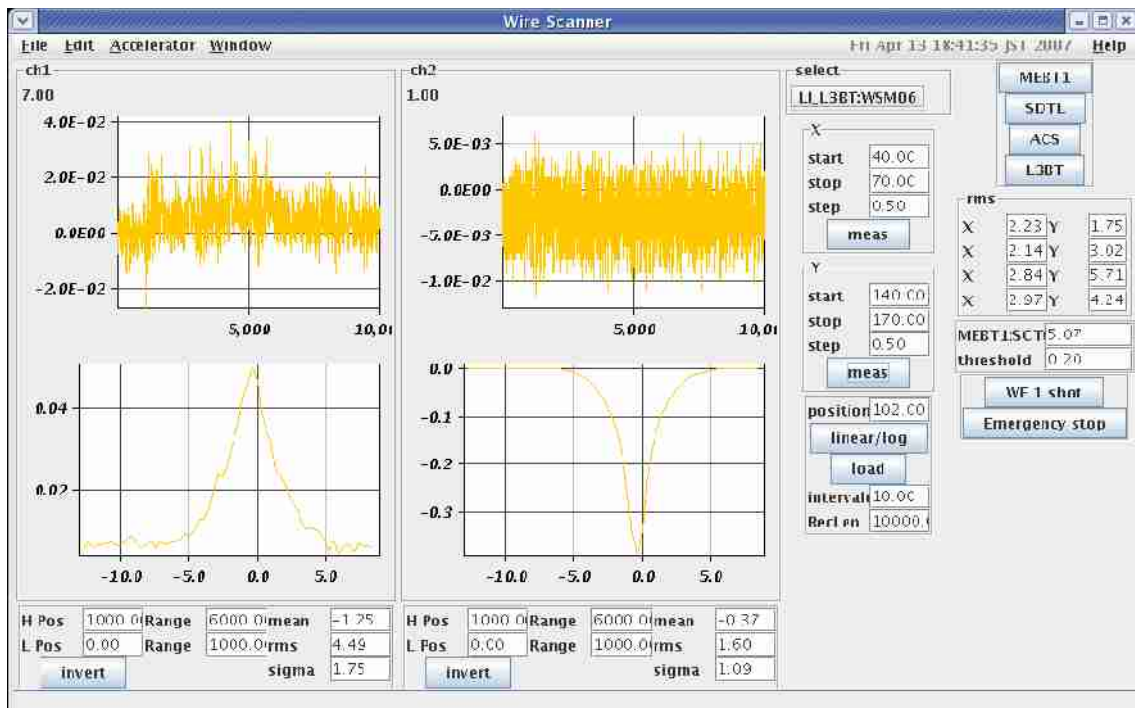
ACS03B:WSM01:Y 75-105/0.5mm, PRETRG=0, TRGDELAY=0, 1000-7000/0-1000



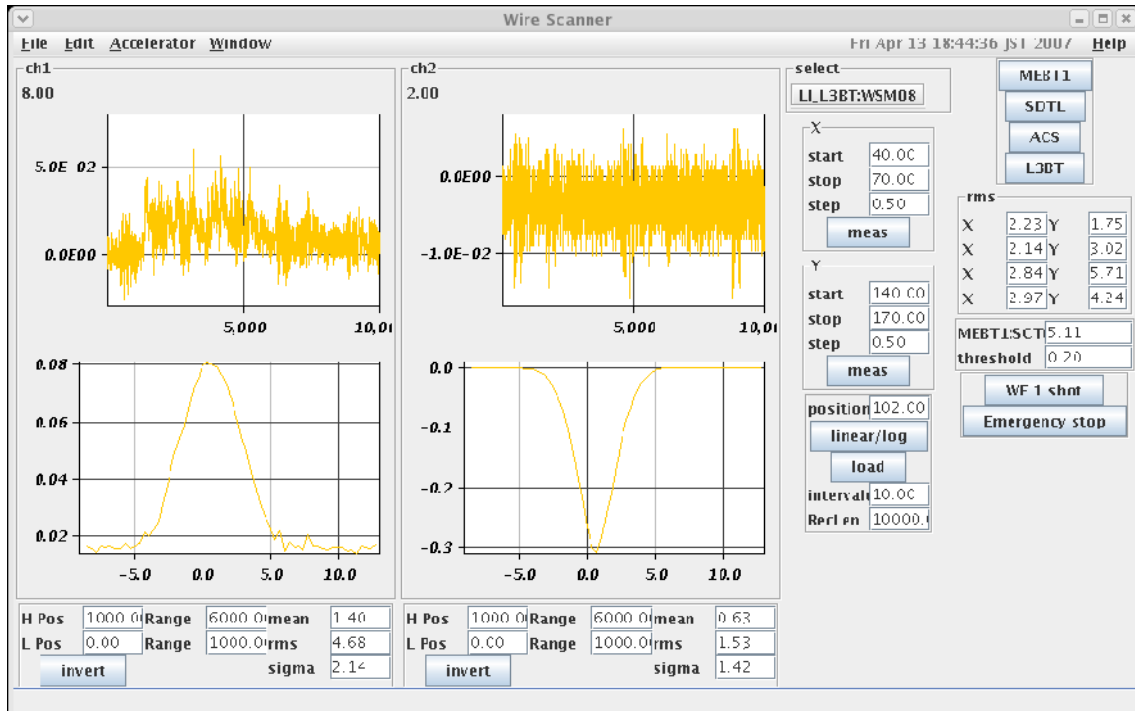
L3BT:WSM06:X 40-70/0.5mm, PRETRG=0, TRGDELAY=0, 1000-7000/0-1000



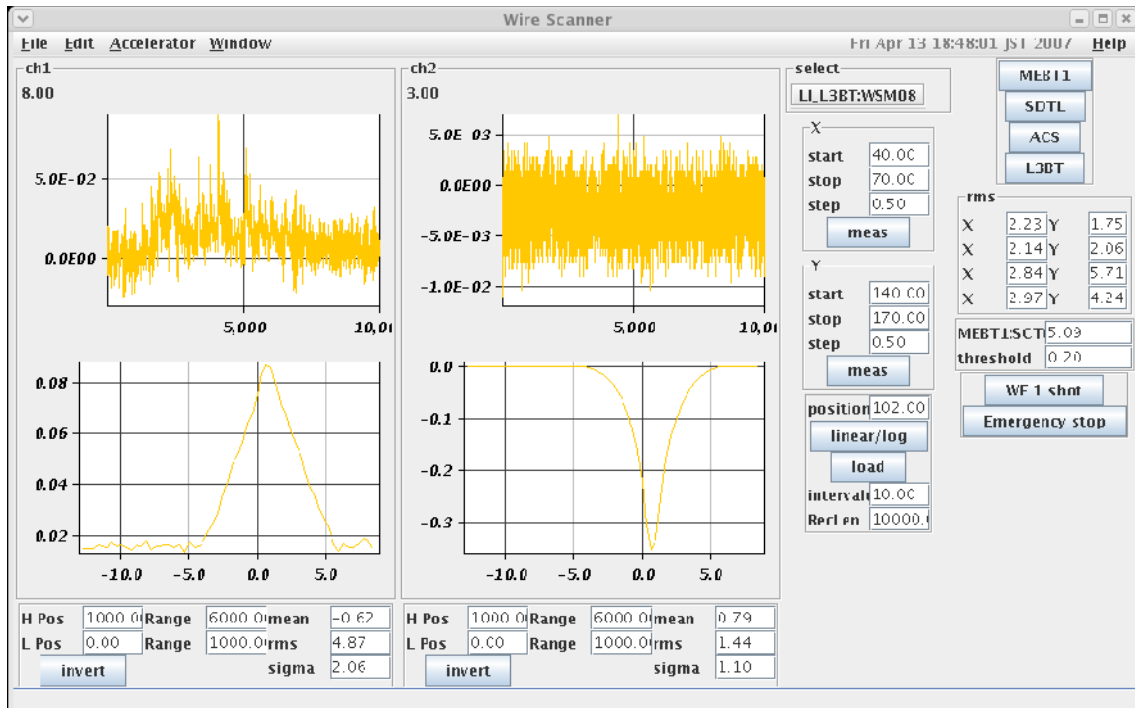
L3BT:WSM06:Y 140-170/0.5mm, PRETRG=0, TRGDELAY=0, 1000-7000/0-1000



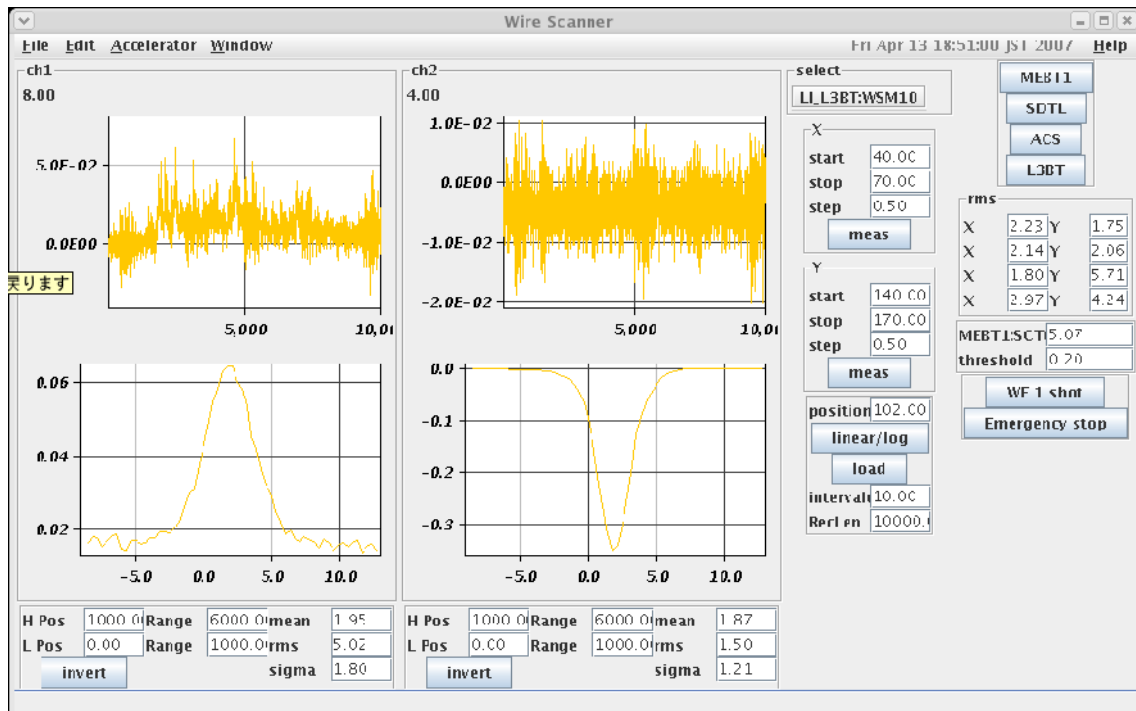
L3BT:WSM08:X 40-70/0.5mm, PRETRG=0, TRGDELAY=0, 1000-7000/0-1000



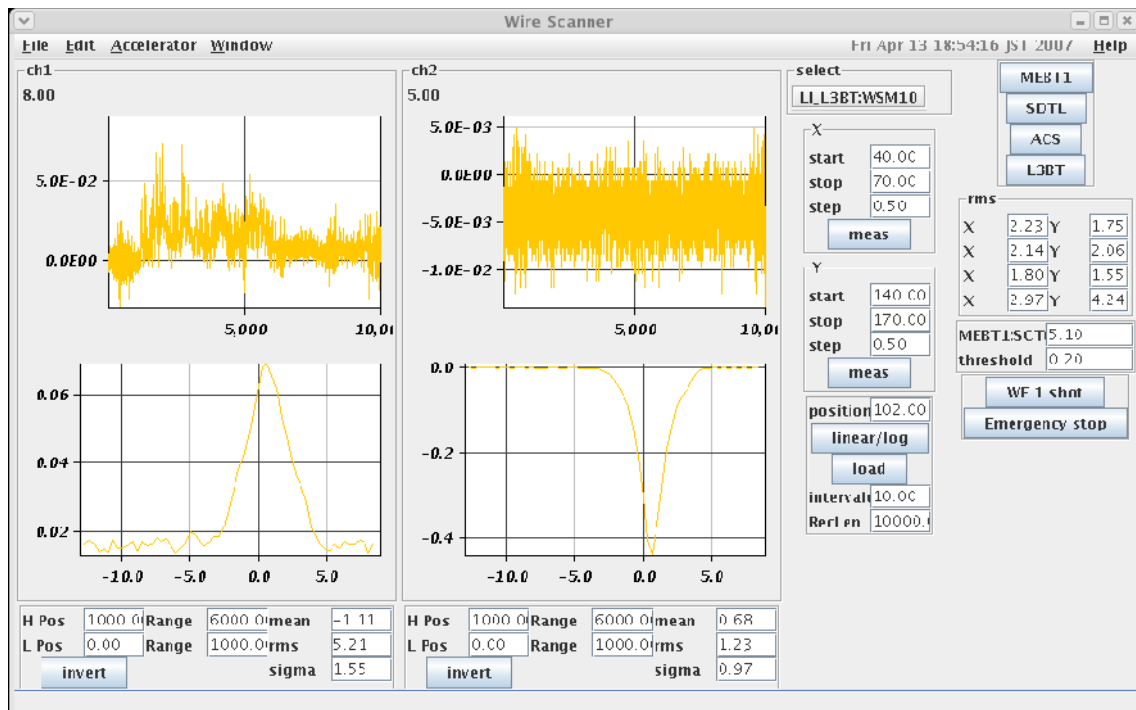
L3BT:WSM08:Y 140-170/0.5mm, PRETRG=0, TRGDELAY=0, 1000-7000/0-1000



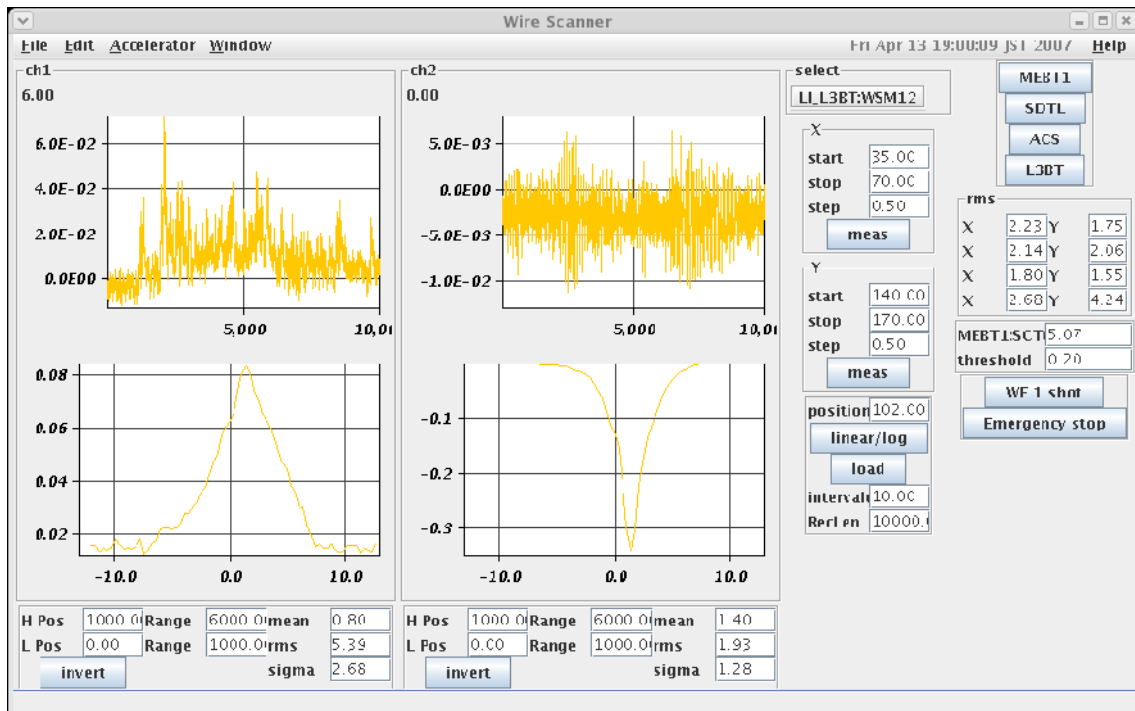
L3BT:WSM10:X 40-70/0.5mm, PRETRG=0, TRGDELAY=0, 1000-7000/0-1000



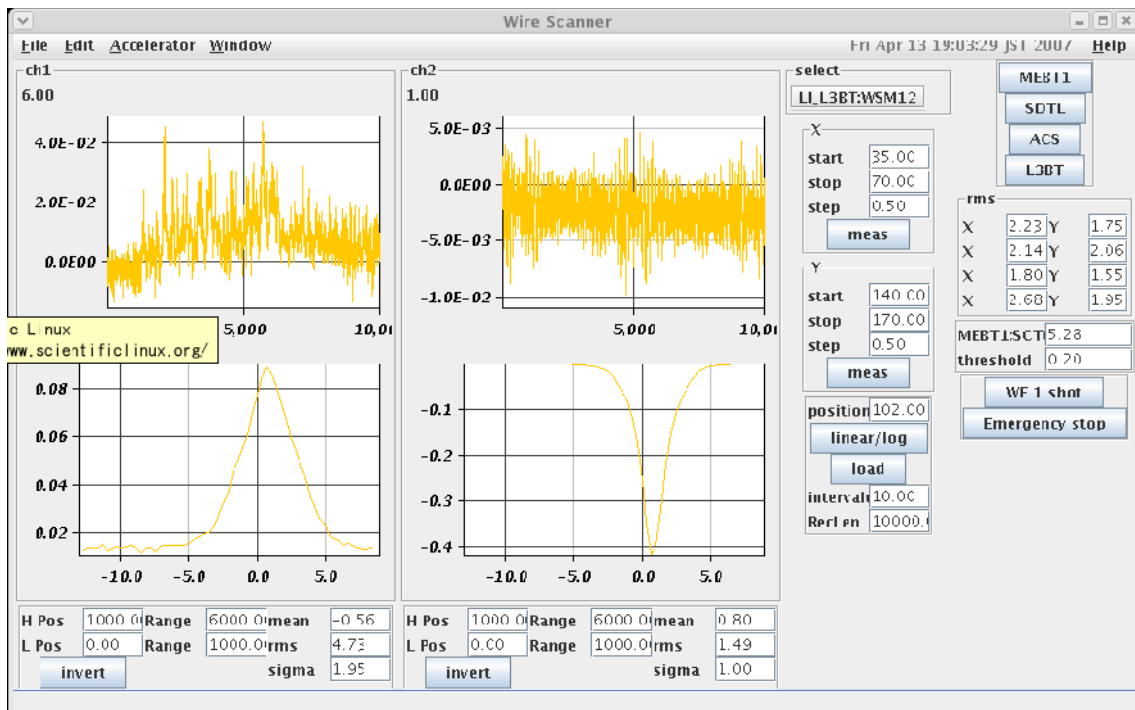
L3BT:WSM10:Y 140-170/0.5mm, PRETRG=0, TRGDELAY=0, 1000-7000/0-1000



L3BT:WSM12:X 35-70/0.5mm, PRETRG=0, TRGDELAY=0, 1000-7000/0-1000



L3BT:WSM12:Y 140-170/0.5mm, PRETRG=0, TRGDELAY=0, 1000-7000/0-1000



SDTL X Gaussian fit sigma

	S02A	S02B	S03A	S03B
BLM	2.13	2.09	2.07	1.79
Wire current	1.77	1.74	1.59	1.49

SDTL Y Gaussian fit sigma

	S02A	S02B	S03A	S03B
BLM	2.29	2.57	2.66	1.79
Wire current		1.69	1.73	1.49

A0BT X Gaussian fit sigma

	MEBT2	ACS01B	ACS02B	ACS03B
BLM	2.21	2.14	2.88	2.97
Wire current	1.36	1.12	1.13	1.47

A0BT Y Gaussian fit sigma

	MEBT2	ACS01B	ACS02B	ACS03B
BLM	2.96	3.02	5.71	1.78
Wire current	1.31	1.19	1.06	1.34

L3BT X Gaussian fit sigma

	WSM06	WSM08	WSM10	WSM12
BLM	2.23	2.14	1.80	2.68
Wire current	1.57	1.42	1.21	1.28

L3BT Y Gaussian fit sigma

	WSM06	WSM08	WSM10	WSM12
BLM	1.75	2.06	1.55	1.95
Wire current	1.09	1.10	0.97	1.00